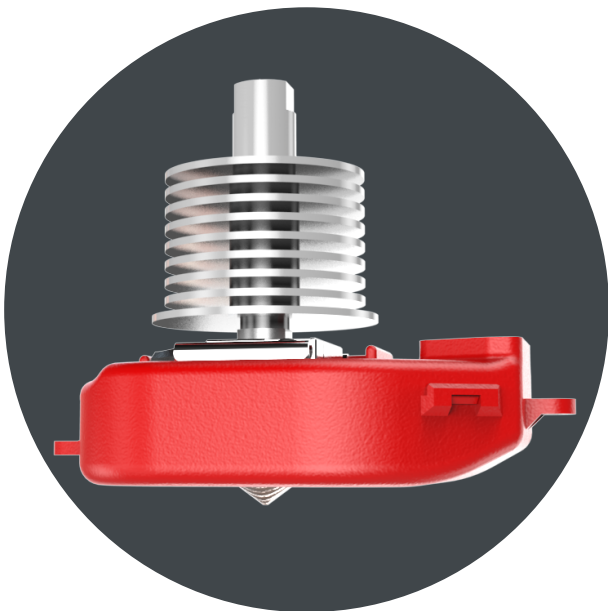


GUIDER II S



UPDATE

The extruder of Guider II S will be upgraded to a high-temperature version.

- It can reach to 300°C, so as to support more filament printing.
- This will be updated directly on the printer at factory instead of a spare part.

**SUPPORT
FILAMENT**

ASA

PETG

PC

PA

ABS

PLA

PLA Change Color

PLA METAL

FUNCTIONS

Heatable-platform

Assisting-leveling

Filament-detection

Camera monitor

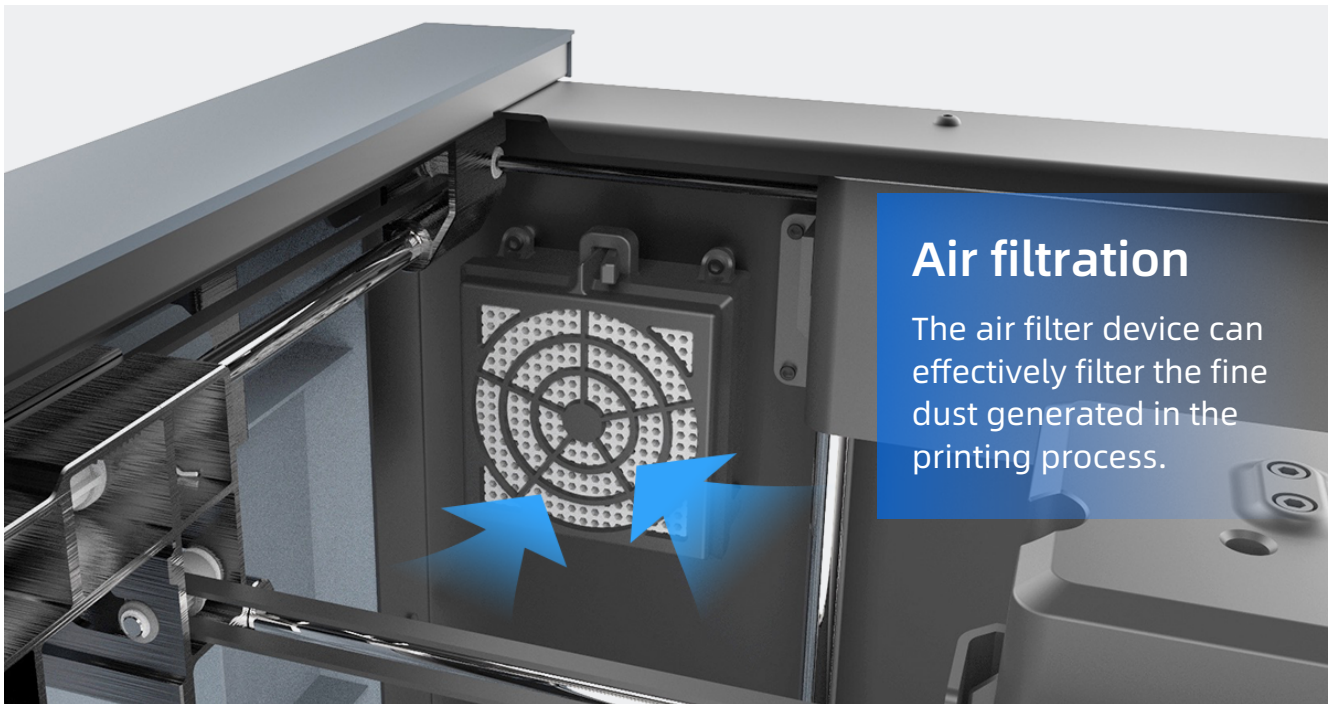
Closed body

Resume printing

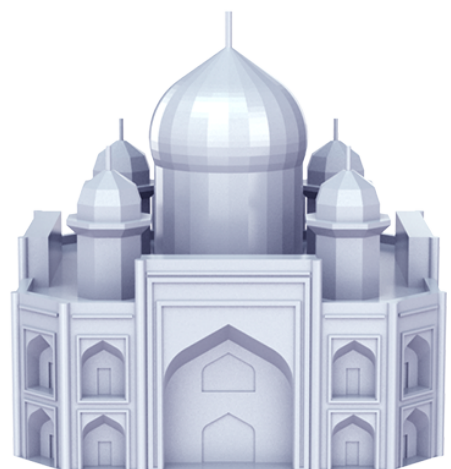
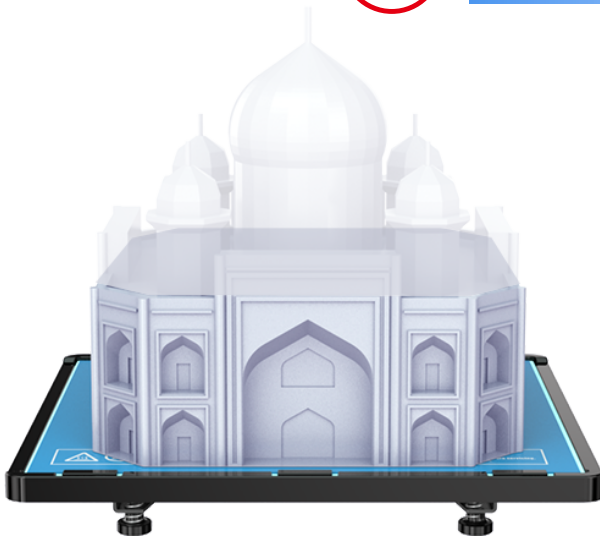
Touch screen

Wifi

Ethernet



Power failure record recovery



PRINT

Extruder number:	1
Extruder diameter:	0.4mm
Maximum set temperature of extruder:	300°C
Print Volume:	280*250*300mm
Print Speed:	10-150mm/s
Maximum set temperature of platform:	120°C

DEVICE

Printer Volume:	490*550*560mm
Screen:	5-inch Touch Screen
Net Weight:	30kg
Input:	100-240 VAC,47-63Hz
Power:	500w
Internal Storage:	8g
Spool:	External

COMMUNICATION

Data transmission:	USB cable,USB stick,Wi-Fi,Ethernet,FlashCloud,PolarCloud
Software:	FlashPrint
Output:	GX/G files
Input:	3MF/STL/OBJ/FPP/BMP/PNG/JPG/JPEG files